



# Handicare Ceiling Lifts

Opening Your Home to You Again

# Reliability and Value

A good lift does two things: goes up and goes down, safely and reliably. For more than a decade, the Handicare C-450 and P-440 lifts have established an industry-leading reputation for reliability. Reducing injuries for users and caregivers alike, they have safely moved thousands of loved ones in the home environment, at a price that has set the standard for value in the industry. Our all new AP-Series joins our family of ceiling lifts with technology and features that promise to keep your loved ones safe in their homes.



# Making Everyday Life Easier



## Age in Place: Live in the Home you Love

Why leave the home you've grown to love? With our ceiling lift solutions you can age in place in the comfort of your own home.

Our permanent ceiling lift installs can be designed so moving throughout your home becomes an effortless task while our portable solutions require no construction and can be taken anywhere.

## Keeping Families Connected + Together

We know providing the best care to your family members is most important to you. Our ceiling lifts are designed with families in mind, and easy to use with safety features that protect the ones you love.

Spend more time together as a family and less time figuring out how to do it.



# C-450 Ceiling Lift

## The Dependable Choice for Moving Through Your Home Safely and Easily

For use in the home, the Handicare C-450 ceiling lift helps users regain freedom. Depending on his or her ability, the Handicare C-450 ceiling lift can be operated by the user or with a caregiver's assistance. Quiet and smooth, our C-450 is programmable, features a digital display and has a weight capacity of 450 lbs. Available with Constant Charge, Return to Charge and Power Traversing options, the Handicare C-450 ceiling lift can restore independence for users.





## Versatile Lifting Options

The C-450 is a versatile fixed ceiling lift providing multiple lifting options for a safe and easy transfer. Paired with different Handicare slings, the C-Series can lift, transfer, position, turn, boost and even provide support to limbs for dressing changes.

## Easy to Use Hand Control

Quiet and smooth, our compact C-450 ceiling lifts feature a pneumatic hand control that has no electrical components for additional safety. The large buttons make it easy to operate the lift and provides clear directional indicators.



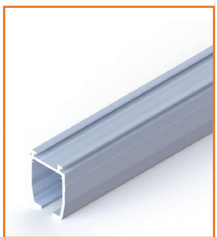
# Ceiling Tracks

## Create the Path to Where You Want to Go

The Handicare C-450 ceiling lift is used on customized, fixed ceiling track systems that transports a user from a bed or wheelchair to a bathroom, kitchen, living room or almost any location in the house. Handicare ceiling track rail is made from powder-coated aluminum. It's offered in straight and curved sections, and is available in five profiles to meet the needs of any installation. For greatest safety, professional installation by an authorized Handicare dealer is required for any ceiling lift track system.



## Track Options



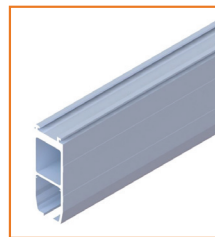
**Regular Track**  
Standard rail for most applications.



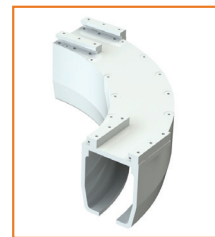
**Flush Mount Track**  
For the lowest-profile installation.



**Super Track**  
Heavier rail for longer free spans between attachment points.



**TrackPlus**  
Our highest rigidity track for our longest free spans.



**Quick Curve**  
The smallest curve in the market only offered by Handicare to address tight corners and obstacle avoidance with a 6.5 in (165 mm) radius.



**Curved Track**  
With three angle options (45 and 90 degrees), provides endless room layout options and is available in both standard and flush mount.

# Slings

## The Most Complete Sling Assortment Available

Handicare is your trusted slings provider. With over one million slings manufactured worldwide, we offer the most comprehensive line of shapes, sizes and materials that can be used with any ceiling lift.

From simple to the most complex transfers, Handicare slings are designed to aid caregivers and provides a solution for every type of transfer.



## Specifications & Part Numbers



Ask your dealer about our complete assortment of slings that include:

Hammock, Hygiene, Positioning, Universal and Speciality Slings available in a wide variety of materials and sizes for both children, adults and bariatric patients.

# Carry Bars

## The Right Carry Bar for Every User

To use the Handicare C-450 ceiling lift, you need to utilize the proper carry bar for safe and comfortable lifting. Handicare offers a wide range of carry bars suited to most every situation, including: bars fitted with bull horn connectors or spring latch connectors; narrow bars for small users such as children up to wide bars for more weighty and pain-sensitive users.

Our Quick Release System (QRS), makes swapping carry bars a snap. Simply open the latch, rotate the hook and attach your desired carry bar.



## Specifications & Part Numbers



### Carry Bars - Spring Latch Connector:

with Strap

360987: 14.0 in (355 mm)

360986: 18.2 in (461 mm)

360985: 21.6 in (550 mm)

with Quick Release System (QRS)

360983: 14.0 in (355 mm)

360982: 18.2 in (461 mm)

360981: 21.6 in (550 mm)



### Carry Bars - Bull Horn Connector:

with Strap

360937: 12.8 in (325 mm)

360936: 16.7 in (425 mm)

360935: 20.7 in (525 mm)

360934: 26.4 in (670 mm)

with Quick Release System (QRS)

360933: 12.8 in (325 mm)

360932: 16.7 in (425 mm)

360931: 20.7 in (525 mm)

360930: 26.4 in (670 mm)



# Independent Lifter

## Meet the Independent Lifter

For those with moderate to strong upper body function, Handicare also offers the Independent Lifter that puts users in control of their transfers and removes the need for a sling. The patient operates the controls and pilots their own transfers around the swimming pool, bathroom, bedroom or wherever. The Independent Lifter reduces risk to the caregiver and is ideal for homecare scenarios where the user prefers a safe, simple and self-reliant lifting experience.



## Specifications & Part Numbers



### Part Numbers

Small: 341600  
Medium: 341610  
Large: 341620

### Dimensions (L x W x H)

23 x 20 (Adjustable) x 30 in  
[584 x 508 (Adjustable) x 762 mm]

### Safe Working Load (SWL)

440 lb (200 kg)

# P-440 Ceiling Lift

## For All the Capability of a Ceiling Lift System That You Can Take Anywhere

Lightweight and portable, the Handicare P-440 ceiling lift is easily removed from one track and installed to another, so you can quickly share a single lift unit in ceiling track systems in multiple rooms in your home or in freestanding track systems that can be used just about anywhere. The Handicare P-440 has a weight capacity of 440 lbs.





## Easy to Carry only 10.5 lbs

The P-440 weighs only 10.5 lbs. Moving from room to room has never been easier with its unique ergonomic carry handle located on the top of the lift.

An integrated control panel is located on the front for easy accessibility. Here you can find buttons to raise and lower users, battery status indicators and the E-Down button for emergency lowering.

## Easy to Use Built for Safety

Quiet and smooth, our portable P-440 ceiling lifts feature a pneumatic hand control that has no electrical components for additional safety. The large buttons make it easy to operate the lift and provide clear indicators for moving up and down.

Charge the P-440 using a standard plug and socket through the port on the front.



# AP-Series Ceiling Lifts

## Our Most Advanced Ceiling Lift for Homes Built in a Ultra Portable Package

The all new Handicare AP-Series Portable Ceiling Lifts raise patient handling to the next level with safety features and breakthrough technology only found in healthcare facilities. Our AP-Series comes equipped with industry leading heavy duty smart batteries that provides **up to 175% more lift cycles** than our previous generation portable lifts with reduced power consumption. The AP-Series is available in two weight capacities of 300 and 450 lbs.





## Advanced Safety Systems

The AP-Series leads the pack with industry first safety features. The antimicrobial strap with reinforced edges and wear indicator marks help in reducing infection, increasing durability, and provides visual detail of when to replace lift straps.

**ActiveSense** Tilt Detection stops the AP-Series and provides audible alerts when the lift is tilted at unsafe lifting angles. The unique **SafeGuard** Hook increases patient safety, helping eliminate sling loop migration during patient transfers. The hook pivots upwards when not in use for added convenience and portability.

## Two Models

The AP-Series is available in two models providing the same level of safety but with different safe working loads and lifts per charge.

**AP-300** offers a safe working load of 300 lbs and 48 lifts at 180 lbs. **AP-450** offers a safe working load of 450 lbs and 80 lifts at 275 lbs. Both models include a full color digital hand control with display. The AP-Series hand control puts all lift data and diagnostic information right the palm of your hand. The active display provides updates on all lift movements and provides safety alerts when detected.



# FST-300

## Take Your Track Anywhere... Even on Vacation

Are you heading on vacation and need to bring along a lift? Or just want the flexibility to switch rooms at home? Handicare's FST-300 Freestanding track system is both lightweight and durable, designed with both caregiver and user in mind. Ready out of the box for lifts up to 300 lbs, it can be moved and assembled by one person in minutes for easy set-up in any space.



## Specifications & Part Numbers



### Part Numbers

341400

### Construction

Lightweight Aluminum

### Dimensions (L x H)

96 x 90 in (up to)  
[2438 x 2286 mm (up to)]

### Safe Working Load (SWL)

300 lb (136 kg)

### Unit Weight

45 lb (20 kg)

# Castor

## Place a Track in Any Space Without a Permanent Install

For any space where a permanent, fixed ceiling track installation isn't practical, the Handicare Castor lift stand creates a safe lifting solution. With a customized length and height easily adjusted to any of seven different levels, the Castor can perform the low or high lifts your specific circumstances require. And even when the stand can have only one leg on the floor—as when positioned for bathtub transfers—Castor is still your solution with the simple addition of a Handicare Wall mount kit to attach one end of its rail to a wall. The Handicare Castor has a weight capacity of up to 625 lbs.



## Specifications & Part Numbers



### Part Numbers

343100: 82 in (2082.8 mm) Regular Track  
343102: 156 in (3962.4 mm) TrackPlus  
343101: 197 in (5003.8 mm) TrackPlus

### Dimensions (L x W x H)

47 x 82-197 x 79-96 in  
(1194 x 2082.8-5003.8 x 2007-2438 mm)

### Safe Working Load (SWL)

450 lb (204 kg) - 625 lb (283.5 kg)  
Depending on track

### Unit Weight

109-190 lb (50-86 kg)

# Pressure Fit System

Designed to Fit **Any Space**

The Handicare Pressure Fit System can be assembled in minutes, making it a great choice for both temporary and permanent portable solutions. The Pressure Fit track exerts equal pressure between the floor and ceiling to stabilize the unit while ensuring ceilings aren't damaged. It also has a bath adapter that enables safe transfers into standard bathing systems. Available in two, three and four-post designs.



## Specifications & Part Numbers



### Part Numbers

2-Post: 341500

3-Post: 341505

4-Post: 341510

Ask your dealer for various packaged systems with trolleys.

### Safe Working Load (SWL)

440 lb (200 kg)

### Unit Height

Expands from 7' - 9'



# Wall Mount Systems

## Your Alternative to a Fixed Ceiling Lift Installation

Our Wall Mount Systems are used as an alternative to ceiling mounting. The system comes complete with all hardware and can be attached directly into drywall provided that it is at least 3/4" thick. Quickly installed, the Wall Mount System offers the same stability as a fixed ceiling lift installation.

Another alternative is our Wall Mount Brackets which allow a piece of track to be installed directly into the wall.



Wall Mount System



## Specifications & Part Numbers



Wall Mount Brackets

### Part Numbers

2 Post Wall Mount System: 342100  
3 Post Wall Mount System: 342200  
4 Post Wall Mount System: 342000  
Wall Mount Bracket Heavy Duty: 360463  
Wall Mount 6" Connector Bracket: 360466

### Dimensions (L x W x H)

Based on Rail Length

### Safe Working Load (SWL)

Wall Mount System: 800 lb (363 kg)  
Wall Mount Brackets: 625 lb (283 kg)

# C-450

## Specifications

### Motors

Lift Motor: 24 VDC  
Power Traverse: 24 VDC (Opt)  
X-Y Traverse: 24 VDC (Opt)

### Safe Working Load (SWL)

450 lb (204 kg)

### Dimensions (L x W x H)

12.5 x 8.6 x 5.7 in  
(317.5 x 218.4 x 144.8 mm)

### Unit Weight

22 lb (10 kg)

### Lift Case

Flame Retardant ABS

### Safety

Emergency Stop  
Emergency Lowering Device  
Emergency Manual Raising and Lowering

### Standards

IEC 60601-1:2005/A1:2012  
IEC 60601-1-6:2010/A1:2013  
IEC 60601-1-11:2015  
IEC 62366:2007/A1:2014  
ISO 10535:2006  
IEC 60601-1-2:2007  
VL 60601-1:2003

### Hand Control

Pneumatic

### Service Life

10 Years or 22,500 cycles

### Rated Performance

50-60 lifts at Max Load

### Batteries

AH, Sealed Lead Acid  
24 VDC (2 x 12 VDC)  
5.0 AH

### Charger Model

PS2403SRM30

### Charger Input

100-240 VAC, 150-60 Hz 1.5A

### Charge Output

24 VDC, 1.0 Amps

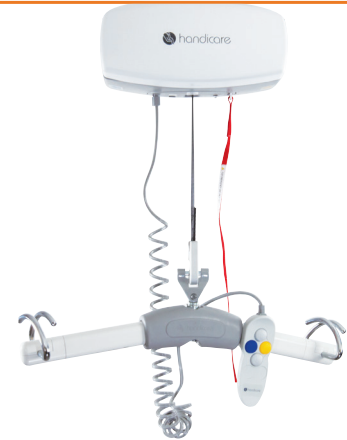
### Lifting Range

Up to 82 in (2082 mm)

### Duty Cycle

1 Min "On"  
9 Mins "Off"

## Part Numbers



**C-450:** Lift Up to 450 lb (200 kg)

323100: Manual Traverse

323150: Power Traverse

323149: Power Traverse w/ RTC

323177: Power XY



# P-440

## Specifications

### Motors

Lift Motor: 24 VDC

### Safe Working Load (SWL)

440 lb (200 kg)

### Dimensions (L x W x H)

18.8 x 7.4 x 6.4 in  
(477.5 x 188 x 162.6 mm)

### Unit Weight

10.5 lb (4.8 kg)

### Lift Case

Flame Retardant ABS

### Safety

Emergency Stop  
Emergency Lowering Device

### Standards

IEC 60601-1:2005/A1:2012  
IEC 60601-1-6:2010/A1:2013  
IEC 60601-1-11:2015  
IEC 62366:2007/A1:2014  
ISO 10535:2006

### Hand Control

Pneumatic

### Service Life

10 Years or 22,500 cycles

### Rated Performance

29 lifts at 180 lb (36.2 kg)

### Batteries

AH, Sealed Lead Acid  
24 VDC (2 x 12 VDC)  
2.3 AH

### Charger Model

2403SRM10

### Charger Input

100-240 VAC, 0.5 Amps,  
50-60 Hz

### Charge Output

24 VDC, 0.5 Amps

### Lifting Range

Up to 79 in (2007 mm)

### Duty Cycle

1 Min "On"  
9 Mins "Off"

## Part Numbers



**P-440:** Lift Up to 440 lb (200 kg)

303070: Lift Only

303073: w/ Extended Hooks

303075: w/o Carabiner



# AP-Series Specifications

## Motor

Lift Motor: 24 VDC

## Safe Working Load (SWL)

AP-300: 300 lb (136 kg)

AP-450: 450 lb (204 kg)

## Dimensions (L x W x H)

14 x 8.2 x 7.5 in

(365 x 209 x 190 mm)

## Unit Weight

AP-300: 12.0 lb (5.5 kg)

AP-450: 12.2 lb (5.5 kg)

## Lift Case

Flame Retardant ABS

## Safety

**ActiveSense** Tilt Detection

**SafeGuard** Hook

Antimicrobial Strap

with Wear Indicator Marks

Emergency Stop

Emergency Lowering

Low Battery Indicator

## Standards

IEC 60601-1:2005/A1:2012

IEC 60601-1-6:2010/A1:2013

IEC 60601-1-11:2015

IEC 62366:2007/A1:2014

ISO 10535:2006

IEC 60601-1-2:2014 (Ed 4.0)

## Hand Control

Digital with Display

IPx4 Rating

## Service Life

10 Years or 22,500 cycles

## Rated Performance

AP-300: 48 lifts at 180 lb (124.7 kg)

AP-450: 80 lifts at 275 lb (81.6 kg)

## Maximum Sound Level

50 dB

## Batteries

AP-300: Single 24V 1.2AH

(20 cell 1.2V) NiMH battery

AP-450: Single 24V 4.0AH

(20 cell 1.2V) NiMH battery

## Charger Model

PS2403SRM26

## Charger Input

100-240 VAC 0.5 Amps, 50-60 Hz

## Charge Output

24 VDC, 1.33 Amps

## Lifting Range

Up to 77 in (1960 mm)

## Duty Cycle

1 Min "On"

9 Mins "Off"



# Part Numbers



**AP-300:** Lift Up to 300 lb (136 kg)

303080: Portable Ceiling Lift

**AP-450:** Lift Up to 450 lb (204 kg)

303060: Portable Ceiling Lift

## We're Trusted.

Over **275,000** ceiling lift installations across North America

## We're Experts.

Handicare nationwide, trained dealers handle the installation and provide **FREE on-site training**

Are you ready to put mobility back in your life?

Call 1-888-637-8155 or  
or visit [www.handicareusa.com](http://www.handicareusa.com) / [handicare.ca](http://handicare.ca)

**HANDICARE** 10888 Metro Court, St. Louis, MO 63043

Toll Free: 866.891.6502 | Fax: 314.692.7858 | [customerservice.northamerica@handicare.com](mailto:customerservice.northamerica@handicare.com) | [www.handicareusa.com](http://www.handicareusa.com)