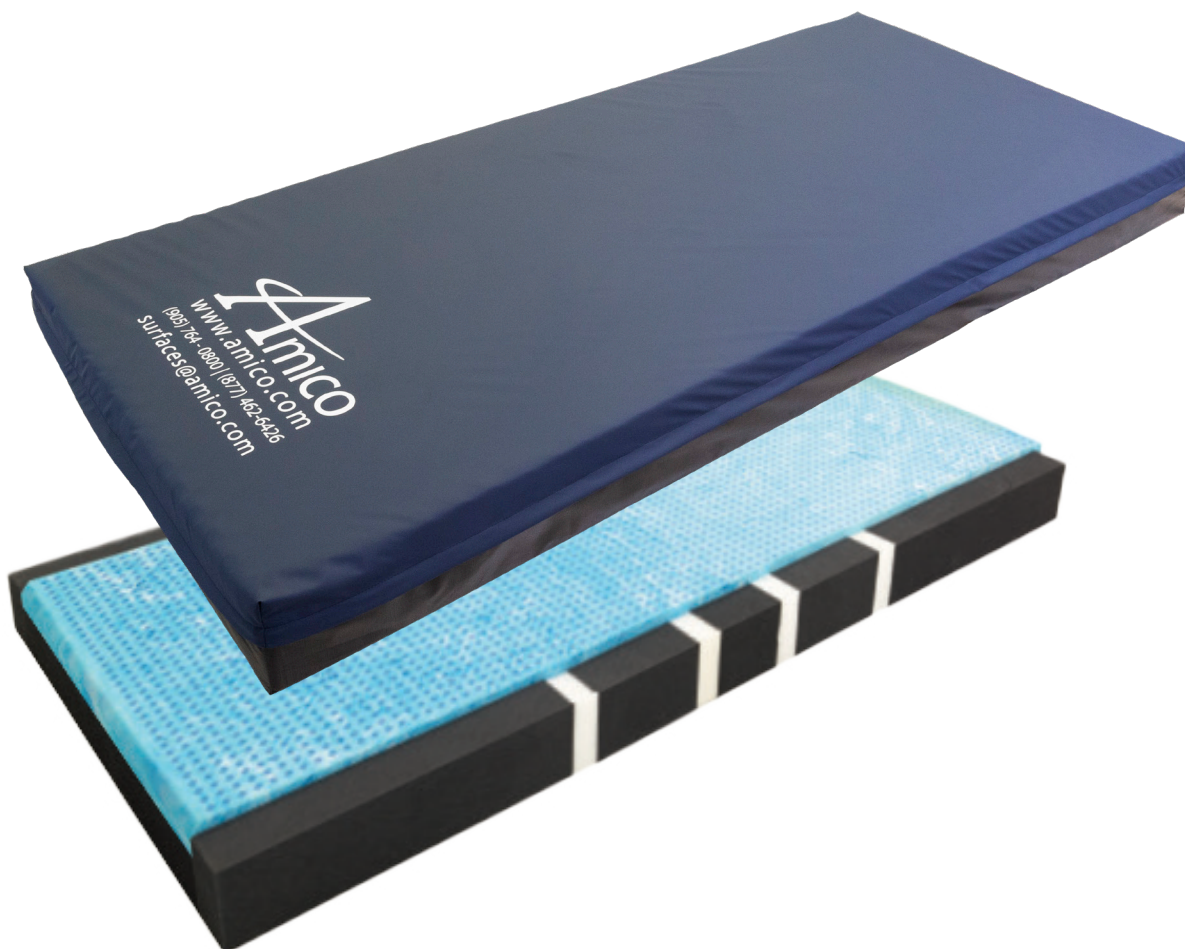


Non-Powered for Moderate to High Risk Patients

Emily Care Series III



Key Features & Benefits:

- Multi-layered and zoned polyurethane foam construction improves pressure distribution
- High density foam offers full body support
- Gel infused Visco elastic memory foam topper design to redistribute pressure
- Topper is ventilated to improve air circulation and reduce heat build up
- 4-way stretch cover is fluid resistant, fire retardant, antifungal and passes antimicrobial test AATCC 30-2004
- Fire barrier sock passes 16 CFR Part 1633
- High density rails increase edge support and provides a stable perimeter
- Flex points enable smooth gatching of sleep surface while in various Fowler positions

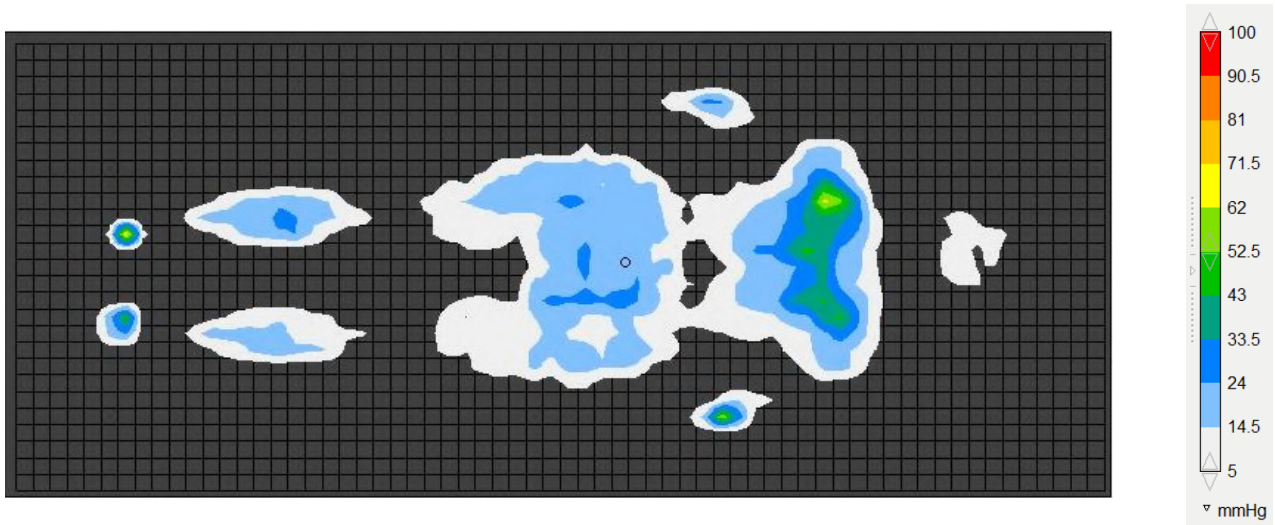
Technical Specifications

Part Numbers

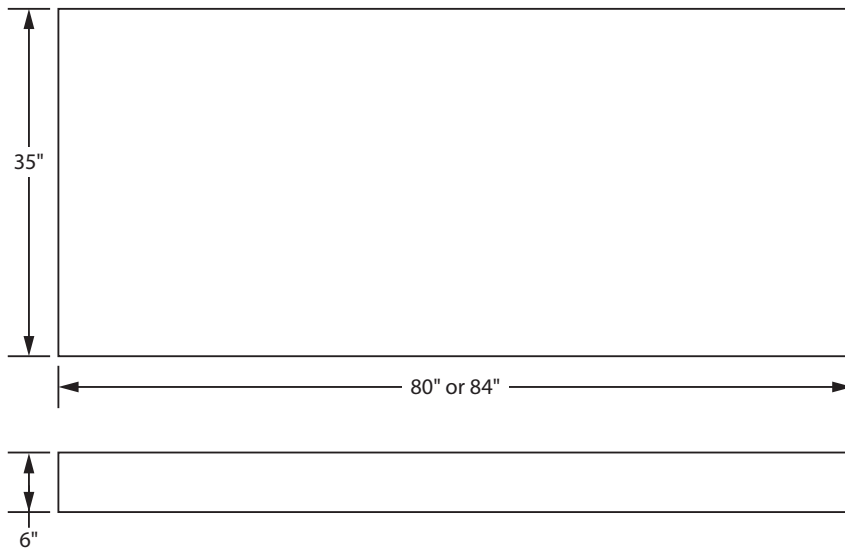
80" x 35" x 6"
84" x 35" x 6"

M-THEA-WL003-80356
M-THEA-WL003-84356

Pressure Mapping



Dimensions



*Custom sizes are available upon request

Amico Beds Corporation reserves the right to change product specifications without notice.

Warranty: One year

Amico Beds Corporation 85 Fulton Way, Richmond Hill, ON L4B 2N4, Canada | 600 Prime Place, Hauppauge, NY 11788, USA
Toll Free Tel: 1.877.462.6426 | Toll Free Fax: 1.866.440.4986 | Tel: 905.764.0800 | Fax: 905.764.0862