

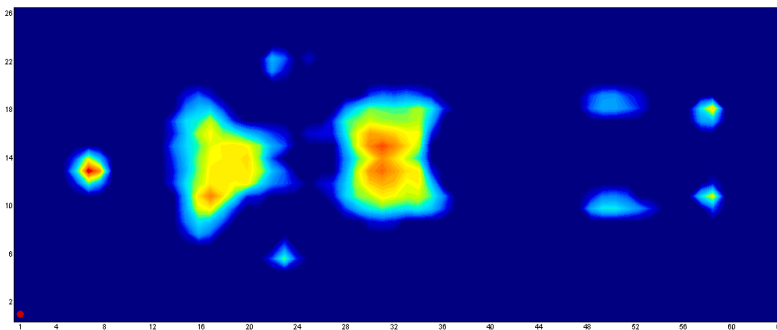
Non-Powered Therapeutic Stretcher Pads



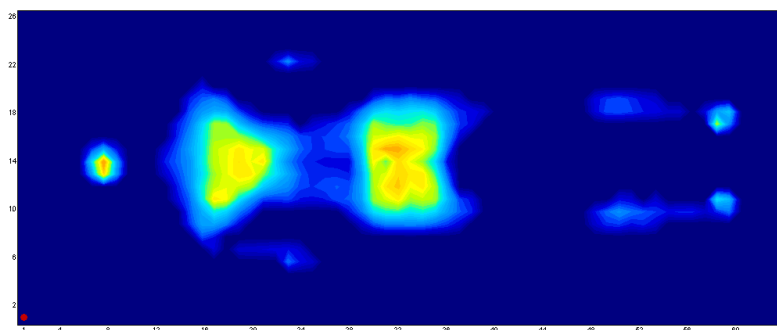
Key Features & Benefits:

- Multi-layered and zoned foam improves pressure distribution and relieves pressure from anatomically high risk areas of the body
- High density foam with superior envelopment provides comfort to the patient
- Vapour permeable, fluid-proof and easy-to-clean cover
- 2-way stretch cover minimizes the risk of shear and friction (available with a 4-way stretch cover upon request)
- Anti-skid strips prevent shifting of the mattress when it is placed on the stretcher frame
- Lightweight design allows for easy caregiver functionality

3" Pressure Map



4" Pressure Map



Technical Specifications



Part Numbers

76" x 25" x 3"

S-MATT-FM-76253-TRA

76" x 25" x 4"

S-MATT-FM-76254-TRA

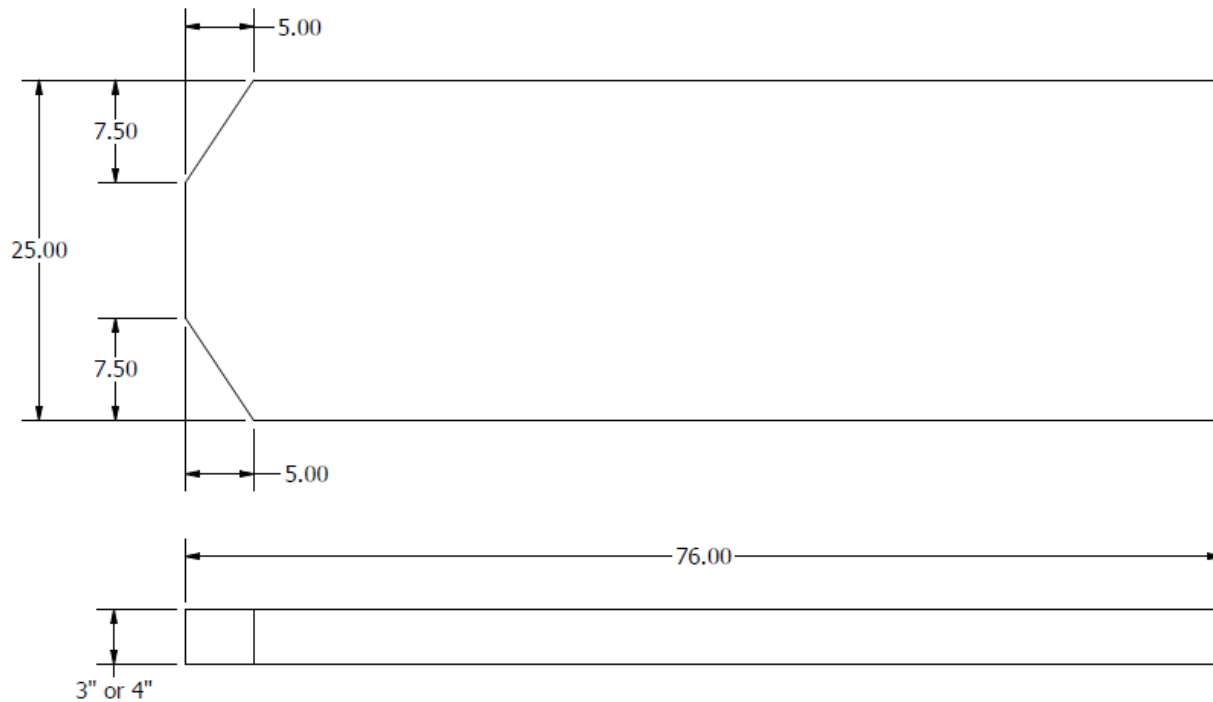
76" x 30" x 3"

S-MATT-FM-76303-TRA

76" x 30" x 4"

S-MATT-FM-76304-TRA

Dimensions*



*Custom sizes are available upon request

Amico Beds Corporation reserves the right to change product specifications without notice.

