

LOUNGE CHAIRS

Please check out our solutions for lounge chairs. We have a dedicated design and project management team on standby to help guide you through the Total Design Solution!



LOUNGE CHAIRS

Kick back and relax in one of our custom lounge chairs! From barrel chairs to wingback chairs, we offer furniture that is not only functional, but that is unique to you and your residents.

Put a check mark in the appropriate boxes below by selecting your desired furniture style and finish.

WOOD COLLECTION

AMBRIA

CFDS-7829-E1

W-28", D-32", H-41"
SH-19", AH-26"



CALVIN

CGR92-5620

W-31.5", D-34", H-35"
SH-21.5", AH-25"



BENNETT

CGR92CGRTUB

W-31", D-30", H-31"
SH-18.5", AH-27"



CARNEGIE

CGR92AFC200

W-34", D-34", H-36"
SH-18", AH-24"



BREE

CHC9556-005

W-29", D-33", H-42"
SH-19", AH-24"



CAROLINA

CCSL1219L-RSD

W-28", D-30", H-36"
SH-22", AH-26"



CHAD

CGR92CHAD

W-29", D-34", H-39.5"
SH-20", AH-25"



CHARLOTTE

CGR92CHAR

W-25", D-23.5", H-34.25"
SH-19", AH-27"



HARPER

CGR92CGRWING1

W-31", D-30", H-42"
SH-19.5", AH-24"



DAN COWARD

CEN5256

W-31.5", D-34", H-36"
SH-19", AH-25"



IVY

CGR92IVY

W-26", D-29", H-36"
SH-20", AH-24"



DEIDRE

CGR92CGR306

W-32.5", D-32.5", H-38.5"
SH-20", AH-26"



JACOB

CGR92CGRWING2

W-26.75", D-33", H-37.5"
SH-19.5", AH-23"



ELLSWORTH

CFDS-7501-01

W-29", D-30.5", H-36"
SH-19", AH-26"



JORDAN

CKGJOR2-G30OPS

W-34", D-27", H-34"
SH-18", AH-24"



KATHLEEN

CGR92AAI357

W-33", D-32", H-30"
SH-21", AH-30"



PALMER

CGR92012DS

W-28", D-28", H-39"
SH-19", AH-24.5"



LILLY

CHR9500-005

W-32", D-32", H-37"
SH-21", AH-21"



POPPY

CCCT3456

W-26", D-28", H-36"
SH-20", AH-24"



MADELINE

M4201

W-34", D-35", H-40"
SH-20", AH-25.5"



PORTLAND

CCS2401

W-34", D-32", H-40"
SH-19", AH-25"



NORTON

CIN-LC054-UP

W-29.5", D-29.5", H-41.5"
SH-18", AH-25.25"



RHONDA

CGR90SAD0192

W-27", D-27", H-31"
SH-21", AH-24"



ROXANNE

CKYLCH7085

W-32", D-33", H-40"
SH-20", AH-23"



TIFFANY

CFDS-7829-E1

W-28", D-32", H-41"
SH-19", AH-26"



SHAWN

CCS7000

W-31.5", D-32.5", H-39"
SH-18.5", AH-26"



VICKI

CGR92HOU780

W-32", D-32", H-40"
SH-20", AH-25"



SHEILA

CGR92DAR228-2

W-24", D-25", H-30"
SH-20", AH-28"



WHITNEY

CAN1265-925

W-30", D-34", H-33"
SH-18", AH-24"



AVAILABLE FINISHES



Biltmore Cherry



Empire Mahogany



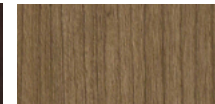
Fonthill Pear



Aria



Cocobala



Talas Cherry



Kensington Maple



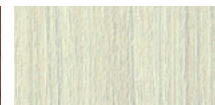
Solar Oak



Wild Cherry



Windsor Mahogany



Arctic Groovz



Shaker Cherry



ALUMINUM COLLECTION

JAYELLE CDELG-900

W-29.5", D-28", H-36"
SH-19", AH-24.5"

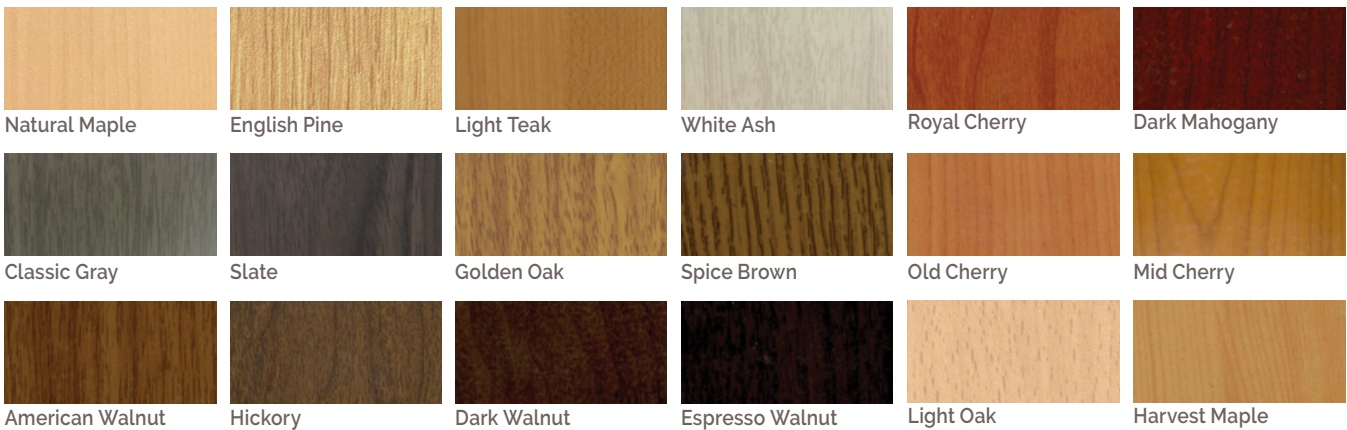


ROYAL CDEAC-890-25

W-24", D-26.5", H-36"
SH-19", AH-26"



AVAILABLE FINISHES



POLYMER COLLECTION

LARINO

CKULAR1B21

W-27", D-32.5", H-35"
SH-19.5", AH-25"



AVAILABLE FINISHES



Sugar Maple



Weathered Teak



Nothern Oak



Vintage Teak



Blackwood



Golden Ebony



Patagonian Cherry



Medium Cherry



English Chestnut



Northern Walnut



Natural Mahogany



African Mahogany



Light Walnut



Silver Ash



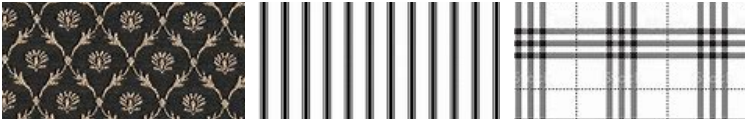
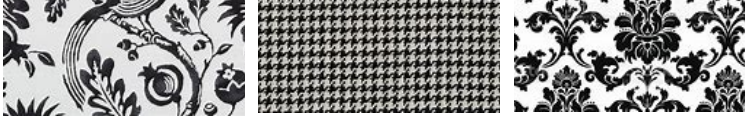
Espresso



Midnight Oak

Every piece of furniture that we offer is available in a multitude of fabrics and finishes. Our design team is happy to create a custom design based on your selections notated below.

PATTERN INSPIRATION



Traditional



Transitional



Contemporary

Company Name:

Contact Name:

Contact Number:

Please save this PDF and email this form over to your sales rep or project manager to receive a custom design package and pricing.

COLOR INSPIRATION



Burgundy



Red



Rust/Orange



Gold



Neutrals



Sage Green



Emerald Green



Blue Green



Blue



Warm Grey



Cool Grey

Color variations may occur due to monitor or printer settings.

1.770.368.4700

Information contained herein is subject to change without notice. The most current and complete product information can be found on our website.

www.grahamfield.com



© 2021, GF Health Products, Inc. All Rights Reserved.
Basic American Medical Products is a trademark of GF Health Products, Inc.
GF Health Products, Inc. is an ISO 13485 Certified Company.